

ADMET-PK/
Bioanalytical

ADMET-PK And Bioanalytical Services

To support both lead optimization and candidate selection, SCYNEXIS provides rapid generation of reliable ADMET and pharmacokinetic (PK) data for compounds in discovery through pre-IND filing. SCYNEXIS rapidly screens for properties such as metabolic stability, permeability and cytotoxicity to prioritize and differentiate lead series.

The ADMET-PK and Biological Screening Team at SCYNEXIS understands the challenges in optimizing the disposition, pharmacokinetics and bioavailability of a molecule, and is well-equipped to determine compound adsorption, distribution and metabolism with state-of-the-art instrumentation and techniques. Our team is fully-integrated to provide sponsors with fast and efficient decision support, and to provide feedback to medicinal chemists for rapid hit seeking, H2L, lead optimization and candidate selection. Lead optimization projects are guided by

a portfolio of *in vitro* ADMET-PK assays including metabolic stability, cytochrome P450 inhibition, metabolite identification, and permeability and transporter interactions, complemented with *in vivo* animal studies to determine PK parameters.

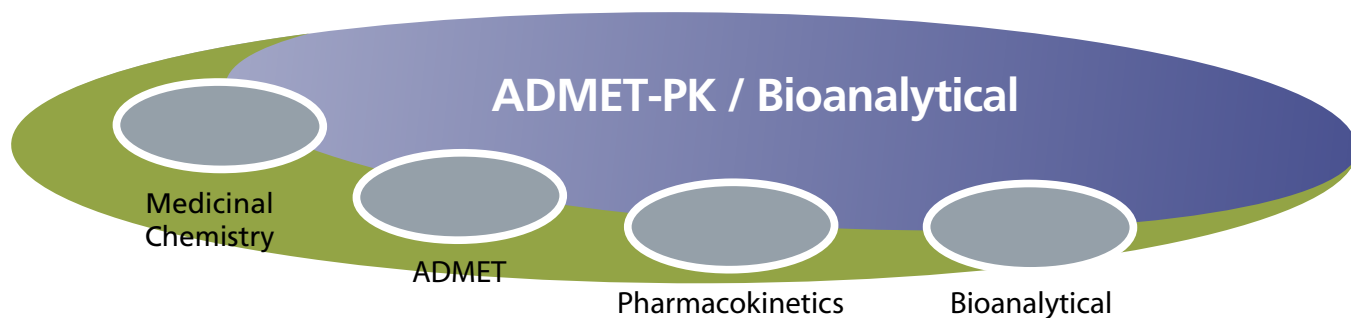
Core Capabilities

In Vitro ADMET

- Solubility
- Permeability
- Caco-2 / MDCK / Transporters
- Metabolic Stability
- Protein Binding
- Cytotoxicity
- Cytochrome P450

Bioanalysis

- Method Development / Qualification
- Tissue Distribution
- Pharmacokinetic Studies
- Prodrug Studies
- Metabolite Identification
- Rapid Analysis / HTS
- Any Species / All Matrices



ADMET, PK-PD & Discovery Biology Capabilities:

Our integrated ADMET-PK, Discovery Biology and Medicinal Chemistry teams are vital to the success of SCYNEXIS' drug discovery and development efforts. We routinely develop rigorous biological screening assays to support all phases of drug discovery. We have extensive experience handling cells, tissues, multicellular and whole organisms such as trypanosomes, *C. elegans* and *Drosophila*. Our extensive use of high-throughput screening (HTS) platforms and automation enables our team to generate data on thousands of samples per week. Whether we are identifying "hits", accelerating hits to leads (H2L), supporting lead optimization (LO) programs, or building predictive PK-PD models, SCYNEXIS believes that utilizing our fully-integrated ADMET-PK, Bioanalytical and Discovery Biology teams greatly enhances both the speed and efficiency of pre-clinical candidate (PCC) selection. Our record of success is exemplified by the 11 PCC's discovered and/or optimized by SCYNEXIS since 2005.

Bioanalytical Capabilities:

Our bioanalytical team develops methods for analysis of samples from both pre-clinical and *in vitro* studies. SCYNEXIS can fully develop and qualify new methods, and transfer existing methods for quantitative analysis of both APIs and metabolites. In support of pre-clinical development, SCYNEXIS performs analyses of compounds in various matrices and tissues across all species. We can process and analyze thousands of biological samples per week; the capability is supported with highly-experienced personnel, state-of-the-art facilities and automated LC-MS/MS instrumentation.

SCYNEXIS can customize protocols and reports based on the stage of a particular project, the therapeutic area, or a client's specifications. On average, the team has over 15 years experience taking compounds from concept to clinic with speed and innovation.

Absorption / Disposition

- Caco-2 / MDCK / MDCK-MDR1
- Tissue Analysis & CNS Disposition
- Tissue Binding (Brains, Testes)
- Cytotoxicity & Cell-Based Assays
- CNS and Hepatic Transporter Studies
- Protein Binding
- PK-PD Modeling
- Animal PK Studies (3rd Party Vivarium)

Metabolism / Excretion

- Hepatocytes / S9 / Microsome-based Assays
- Blood / Plasma / Tissue Stability
- Species Comparisons
- P450 Inhibition
- Metabolite Profiling & Identification
- Biliary Excretion
- Routes of Elimination
- Hepatotox Screening

Instrumentation & Automation

- Automated LC-MS/MS Systems
- Automated Metabolite Profiling
- API 4000
- API 4000 Q-Trap
- API 3000
- LEAP Technologies Sample Handling
- Beckman Biomek FX / NX
- Tecan Evo / Freedom
- COPAS



From Concept To Clinic With Speed And Innovation™

SCYNEXIS, Incorporated • PO Box 12878 • Research Triangle Park • North Carolina • 27709-2878 • USA • +1.919.544.8600

WWW.SCYNEXIS.COM

©Copyright 2010, SCYNEXIS, INC. From Concept To Clinic With Speed And Innovation is a trademark of SCYNEXIS, Inc.
SCYNEXIS and HEOS are registered trademarks of SCYNEXIS, Inc.